

TRACT REGISTER OF ACQUISITION AFTER 1 JAN 1943

TRACT NO.	LAND OWNER	ACREAGE		REMARKS
		TRANS	FEE	
200	ROBERT C. KNUDSEN, et ux	1388.65		D/T Civ 8065 filed 25 Mar 60. Final judgement dtd 12 Apr 63.
200E	"		6.21	Perpetual road easement and R/W from 3 April 1962
201	ROGER W. JESSUP, et ux	1245.32		Deed dtd 26 Jun 62.
201C	ROGER W. JESSUP, et ux	0.38		D/T Civ 8220 filed 17 Jan 61. Final judgement dtd 27 Feb 64.
201E	ROGER W. JESSUP, et ux		190.20	Perpetual flowage easement from 26 June 1962
201E-2	"		16.13	Perpetual road easement and R/W from 26 June 1962
201E-3	"		5.47	"
201E-4	"		0.07	"
202	ROBERT C. KNUDSEN, et al	6.30		D/T Civ 8065 filed 25 Mar 60. Final judgement dtd 12 Apr 63.
203E	PHEBE B. STEUBEN	86.70		Perpetual flowage easement from 1 May 1962
203E-2	"			Entire 2.45 ac included in Tract 203-E
204	WILLIAM H. WHYLER, et al	662.30		Perpetual road easement and R/W from 1 May 1962
205E	WALTER BROWNELL STEUBEN	22.90		Deed dtd 11 Sep 62
206E	SHIRLEY J. HODGE, et al	4.31		Perpetual flowage easement from 17 Sept. 1962
207E-1	F.P. MASTERSON, et ux	0.67		Perpetual road easement and R/W for stream gaging station from 12 April 1963
207E-2	"	0.11		Perpetual road easement and R/W from 12 Apr 1963
208	JOSEPH B. CARRICO	0.42		Lease No. DA-O4-167-CIVENG-63-6 dated 8 Aug 62. For per. 1 Aug 62 thru 31 Jan 64. Use Per 2710 (Spec. Dist. Control No. 112-182) for Precip. Gage Station for indefinite time per. from 26 Oct. 64.
D	DEPARTMENT OF AGRICULTURE FOREST SERVICE	0.06		"
E	"	0.06		"
F	"	0.06		"
G	"	0.06		"
H	"	0.06		"

FINAL **

PROJECT MAP

DEPT. OF THE ARMY
 USING SERVICE U.S. ARMY CORPS OF ENGINEERS
 STATE CALIFORNIA
 COUNTY GLENN, TEHAMA, LAKE, & COLUSA
 DIVISION SOUTH PACIFIC
 DISTRICT SACRAMENTO
 ARMY AREA 6 TH

LOCATION OF PROJECT

9 MILES N.W. OF ORLAND (GLENN CO.)
 MILES OF

TRANSPORTATION FACILITIES

RAILROADS _____
 STATE ROADS _____
 FEDERAL ROADS _____
 AIR LINES _____

ACQUISITION

TOTAL ACRES ACQUIRED _____
 ACRES FEE _____
 ACRES TRANSFERRED _____
 ACRES LEASED _____
 ACRES LESSER INTERESTS _____

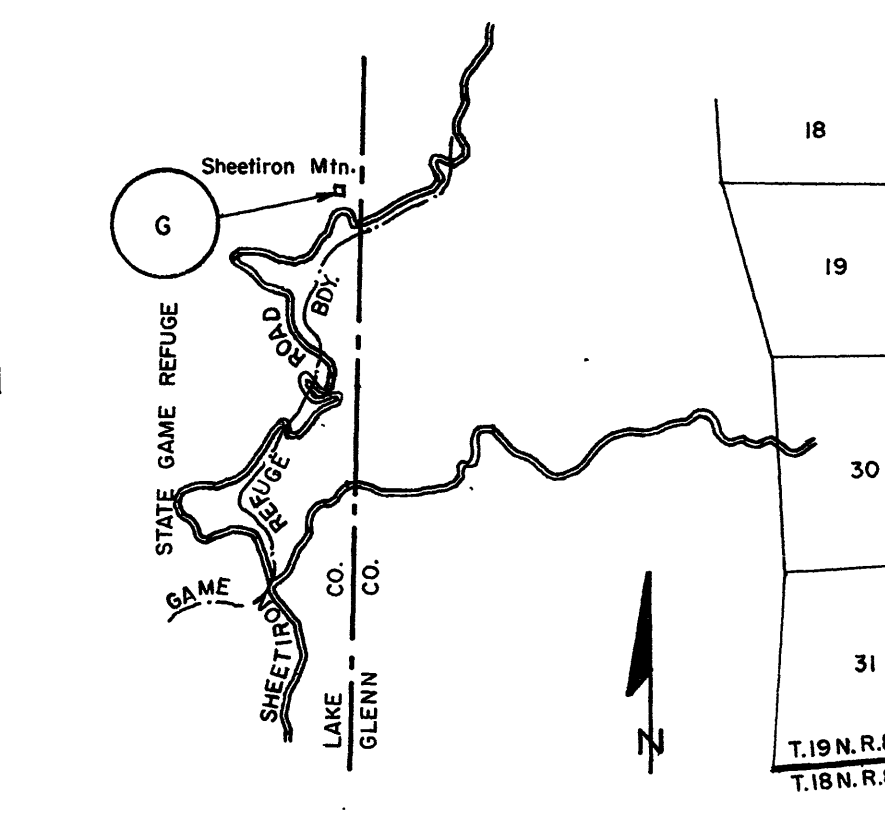
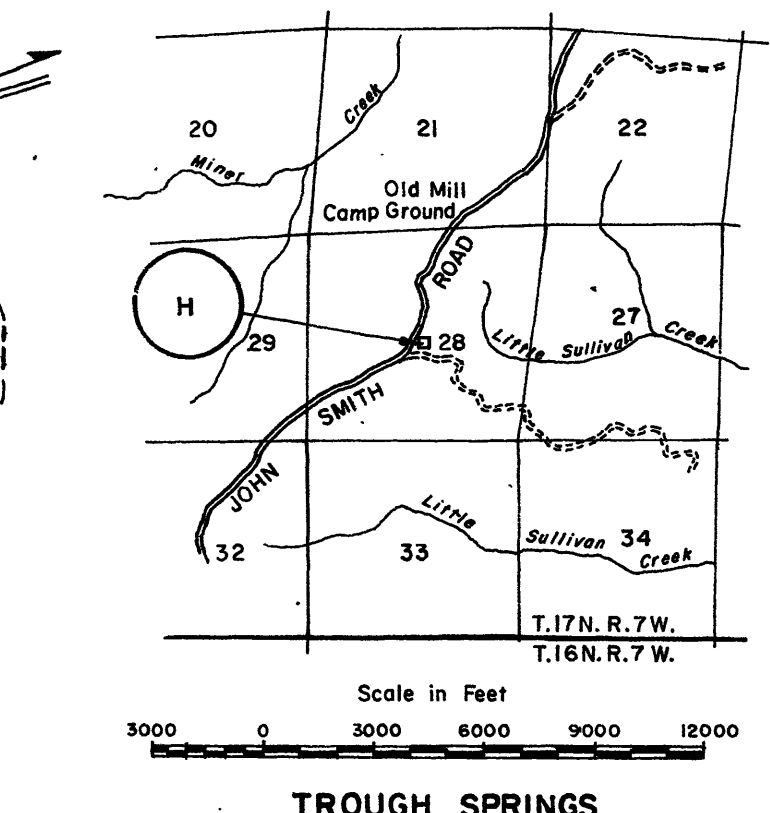
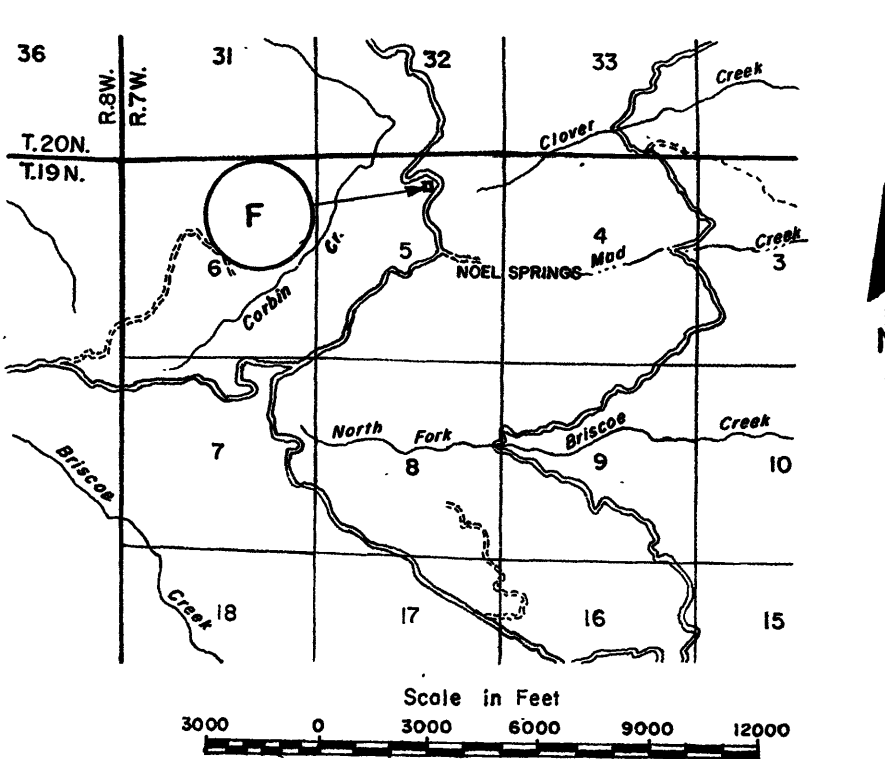
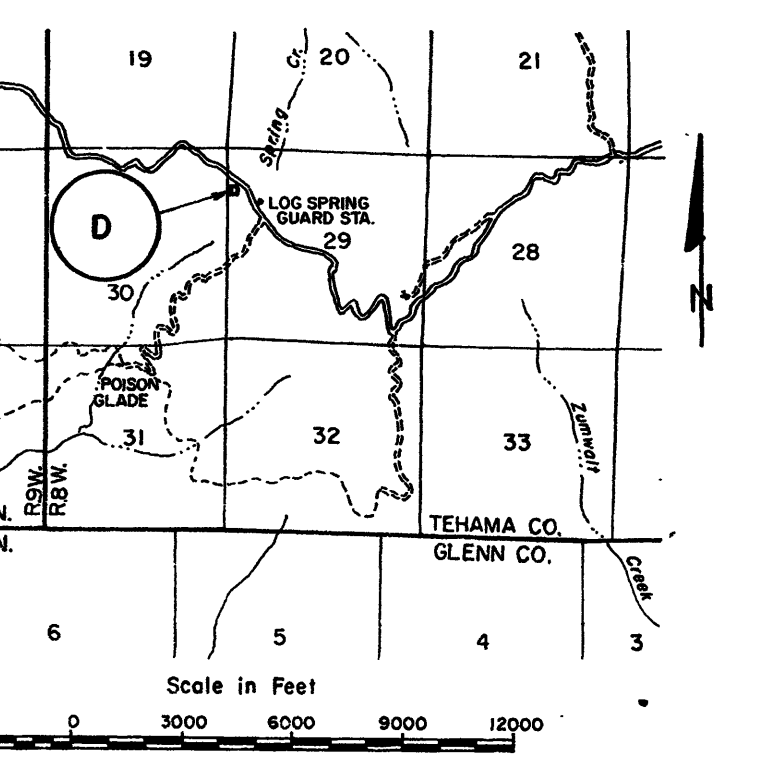
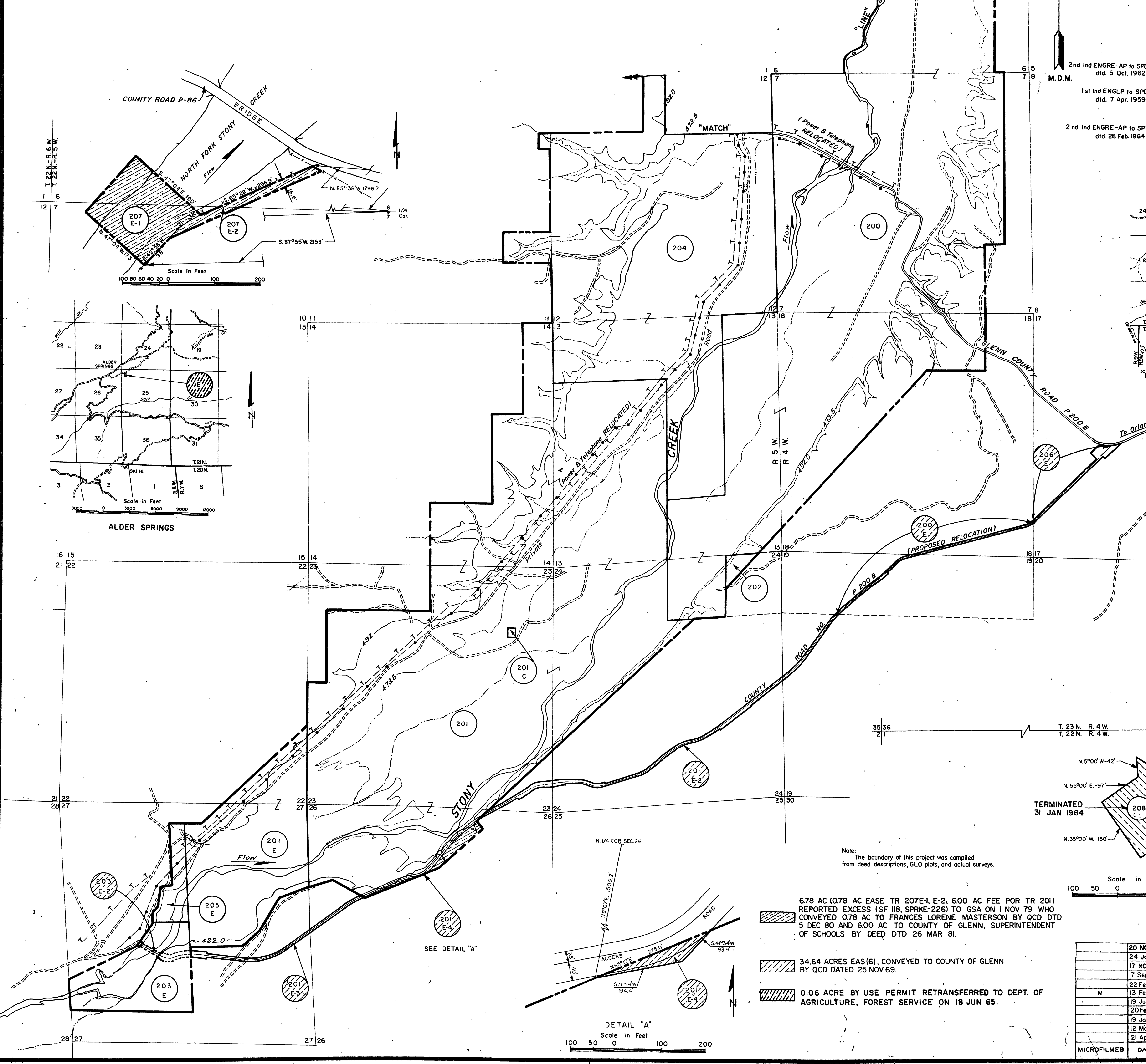
DISPOSAL

TOTAL ACRES DISPOSED OF _____
 ACRES SOLD _____
 ACRES TRANSFERRED _____
 ACRES LEASES TERMINATED _____
 ACRES LESS. INT'S. TERMINATED _____
 ACRES REASSIGNED _____
 ACRES TO _____

LEGEND

EXCEPT FOR THE SPECIAL SYMBOLS SHOWN BELOW MAP SYMBOLS ARE STANDARD IN ARMY MAP SERVICE TECHNICAL MANUAL NO. 33.

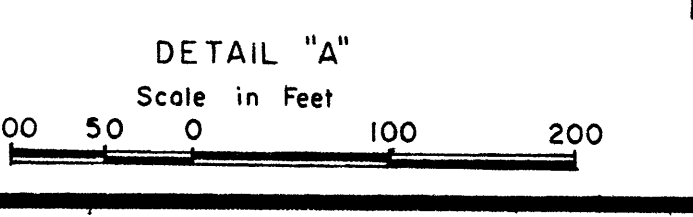
- RESERVATION LINE
- RESERVATION LINE (Actual Survey)
- TRACT BOUNDARY LINE
- TRACT NUMBER
- AVIGATION EASEMENT
- CONTOUR LINE
- DISPOSAL



6.78 AC (0.78 AC EASE TR 207E-1, E-2; 6.00 AC FEE POR TR 201) REPORTED EXCESS (SF 118, SPRKE-226) TO GSA ON 1 NOV 79 WHO CONVEYED 0.78 AC TO FRANCES LORENE MASTERSON BY OCD DTD 5 DEC 80 AND 6.00 AC TO COUNTY OF GLENN, SUPERINTENDENT OF SCHOOLS BY DEED DTD 26 MAR 81.

34.64 ACRES EAS(16), CONVEYED TO COUNTY OF GLENN BY OCD DATED 25 NOV 69.

0.06 ACRE BY USE PERMIT RETRANSFERRED TO DEPT. OF AGRICULTURE, FOREST SERVICE ON 18 JUN 65.



DATE	REVISIONS	BY
20 NOV 57	Supplemental Audit	WMD
24 Jun 58	Due to Supplemental Audit	K.L.A.
17 NOV 58	Added disposal date (0.78 Ac Tr 207E-1, E-2; 6.00 Ac Tr 201)	J.S.M.
7 Sep 73	Disposal Trs 200E, 201E-2, 201E-3, 201E-4, 203E-2, & 206E.	B.W.M.
22 Feb 71	Change Name per Eng Div Memo 258	I.O.G.
13 Feb 70	Due to Final Audit	I.O.G.
19 Jul 63	Added Tr. 208	E.E.G.
20 Feb 63	Added Trs. 207E-1 & 207E-2	F.R.L.
19 Jan 62	Added Trs. 200E, 201E-2, 201E-3, 201E-4, 203E-2, & 206E	D.A.B.
12 May 60	Revised Tr. Register	J.E.G.
21 Apr 60	Revised take line Trs. 201, 201E, 203E, 204 & 205E. Deleted Tr. 201-2, added Tr. 201E	J.E.G.

ACQUISITION AUTHORIZATION
 Public Law No. 534 dtd. 22 Dec 1944
 1st Ind ENGLP to SPD dtd. 7 Apr 1959
 2nd Ind ENGRE-AP to SPD dtd. 5 Oct 1962
 2nd Ind ENGRE-AP to SPD dtd. 28 Feb 1964

SEGMENT "2"

DEPARTMENT OF THE ARMY
 OFFICE OF THE SACRAMENTO DISTRICT ENGINEER
 SOUTH PACIFIC DIVISION

REAL ESTATE

BLACK BUTTE LAKE

APPROVED BY: *[Signature]* DATE 4 DEC 1959

OFFICE, CHIEF OF ENGINEERS, WASHINGTON 25, D. C.
 O.C.E. Approved 2 Oct 70

AUDITED L2-2-0008

Scale in Feet
 1000 500 0 1000 2000

INSTALLATION OR PROJECT NO. SHEET 3 OF 3 DRAWING NO. SC-12-148